



**OPERATIONS  
AND  
MAINTENANCE  
MANUAL**

**Chapter 1**

# **TAYANA 37**

## **OPERATIONS AND MAINTENANCE MANUAL**

Originally prepared by Southern Offshore Yachts.

Converted to digital format by Harvey J. Karten August 1998. Current update: 1/10/02

Many thanks to Ed Potter, Tom Beard and Mauro Migliorelli

## TABLE OF CONTENTS

### I. INTRODUCTION

### II. SPECIFICATIONS

- II-A. General Design Specifications
- II-B. Serial Numbers
- II-C. Materials
- II-D. Construction
- II-E. Importer's Documents
- II-F. Procedures & Data For Documentation .

### III. COMMISSIONING AND DECOMMISSIONING

- III-A. Initial Commissioning
- III-B. Owner Commissioning
- III-C. Decommissioning for Storage
- III-D. Recommissioning After Lay-Up

### IV. OPERATING PROCEDURES

- IV-A. Sailing The Tayana 37 Cutter
- IV-B. Sailing The Tayana 37 Ketch
- IV-C. Tuning The Spars And Rigging
- IV-D. Tuning Under Sail
- IV-E. Handling Under Power
- IV-F. Fuel System
- IV-G. Electrical Systems
- IV-H. The Plumbing Systems

V. MAINTENANCE & MAINTENANCE PROCEDURES

- V-A. The Hull
- V-B. The Deck And Cabin Top
- V-C. Interior Woodwork
- V-D. Spars, Rigging, And Sails
- V-E. Auxiliary Engines & Related Systems
- V-F. Electrical Systems
- V-G. Plumbing and Sanitation Systems

LIST OF ILLUSTRATIONS AND TABLES

Drawing

Tayana 37 Cutter Sail Plan  
Tayana 37 Ketch Sail Plan  
Tayana 37 Deck Plan

Tables

ELECTRICAL SYSTEMS/The Energy Audit System  
(Table IV.-1)

ELECTRICAL SYSTEMS/The 12 Volt System  
(Electric Wire Number & color Codes-Table V.-1.)

Figure

CONSTRUCTION. Thiokol Joints (Figure II.-1.)

FUEL SYSTEM - (Figure IV.-1.)

FRESH HOT AND COLD WATER SYSTEM - (Figure  
IV.-2.)

AUXILIARY ENGINES/Installation  
Exhaust And Engine Mounting -(Figure V.-1.)

ELECTRICAL SYSTEMS/The 12 Volt D.C. System  
(Figure V.-2.)

PLUMBING AND SANITATION SYSTEMS/Bilge Pumping  
Systems - (Figure V.3.)

ANNEX I .....	Winch Assemblies
ANNEX II .....	Warranty
ANNEX III .....	Miscellaneous Info
PHRF Rating	
Rigging (P, I, J and E Values) of Cutter	
Fuel Tank Depth vs. Volume	

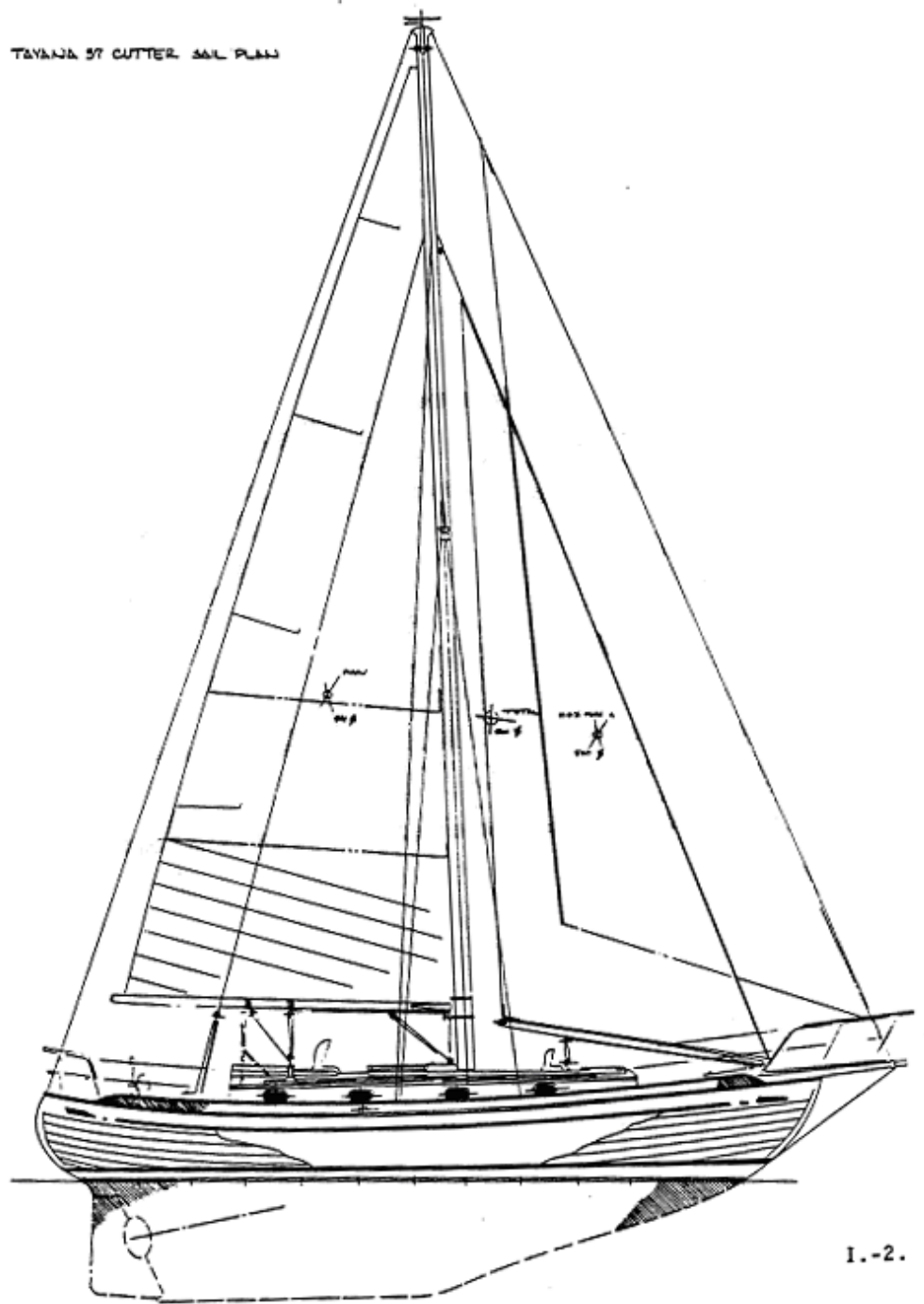
## INTRODUCTION

You are to be congratulated on your selection of the TAYANA 37 cruising yacht. There is no better yacht in her size range on the market. With care and proper maintenance she will not only prove to be an excellent investment, she will take you cruising anywhere in the world safely and comfortably. This is being proven almost daily. Ocean crossings by TAYANA 37's are routine. Circumnavigations have been reported. By the same token, over 100 of these yachts are the primary homes of their owners.

The object of this handbook is to help you to know your yacht and to guide you in providing proper care and maintenance. And really, it isn't very hard- in fact, it can be a lot of fun. Your TAYANA 37 has been designed and built with maintenance in mind. Machinery, pumps, glands, seacocks, etc. have been installed to insure full and easy access. Where simplicity and adequate function do not conflict, the simpler equipment has been chosen. In a few cases, custom interiors have complicated some equipment installations, but you will find that adequate access and straight-forward installation have alleviated the potential for problems.

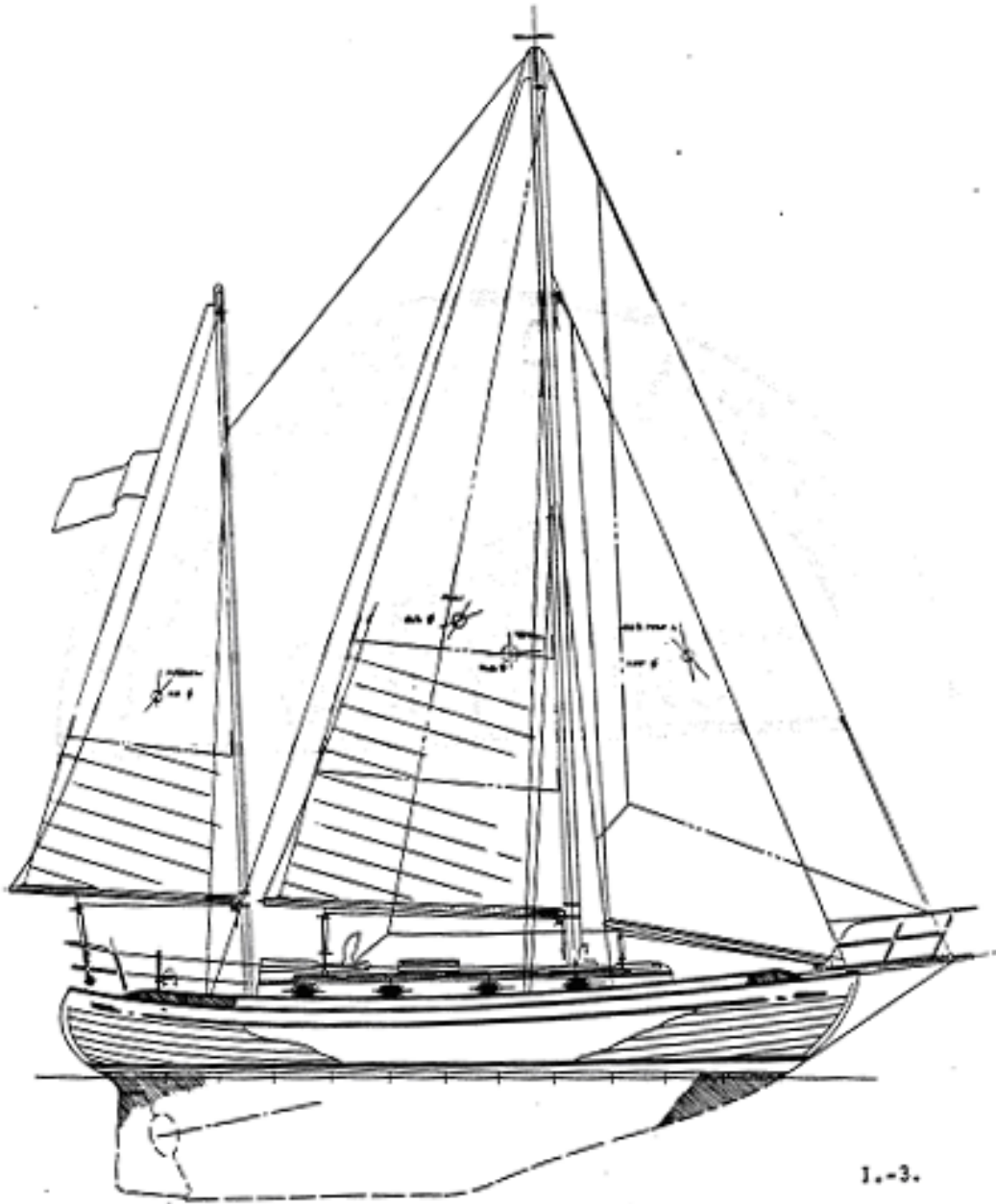
In the various sections which follow, you will find discussions of materials and construction, hull maintenance, rigging and sails, machinery-electrical systems and plumbing. But remember, this is a TAYANA 37 manual. It is not a general maintenance manual. It is not designed to take the place of your manufacturer's equipment manuals. In fact, should you find conflicts between this manual and that published by the manufacturer of any piece of equipment, the manufacturer's recommendations should be followed.

TAYANA 57 CUTTER SAIL PLAN

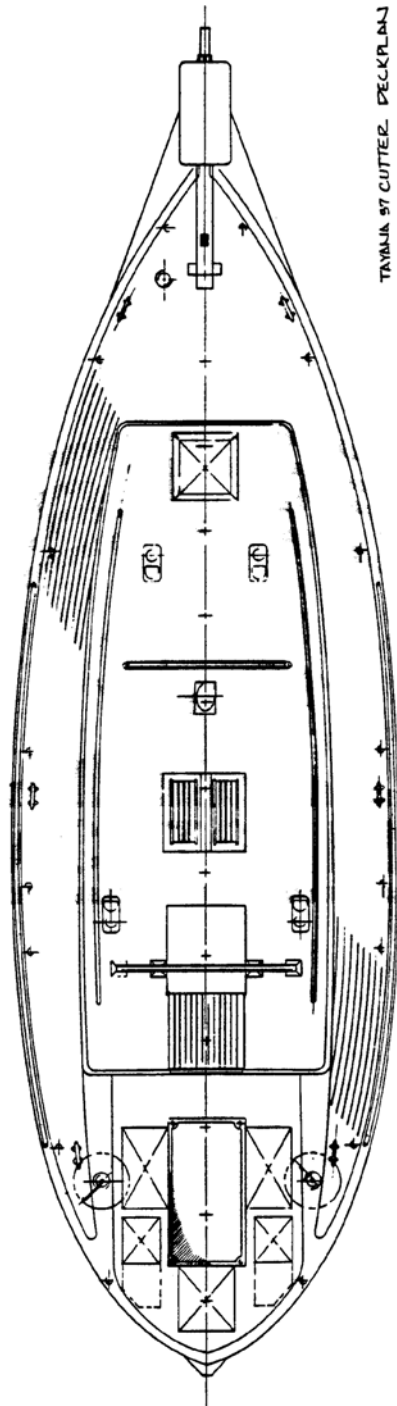


1.-2.

TRIALS OF KETCH SAIL PLAN

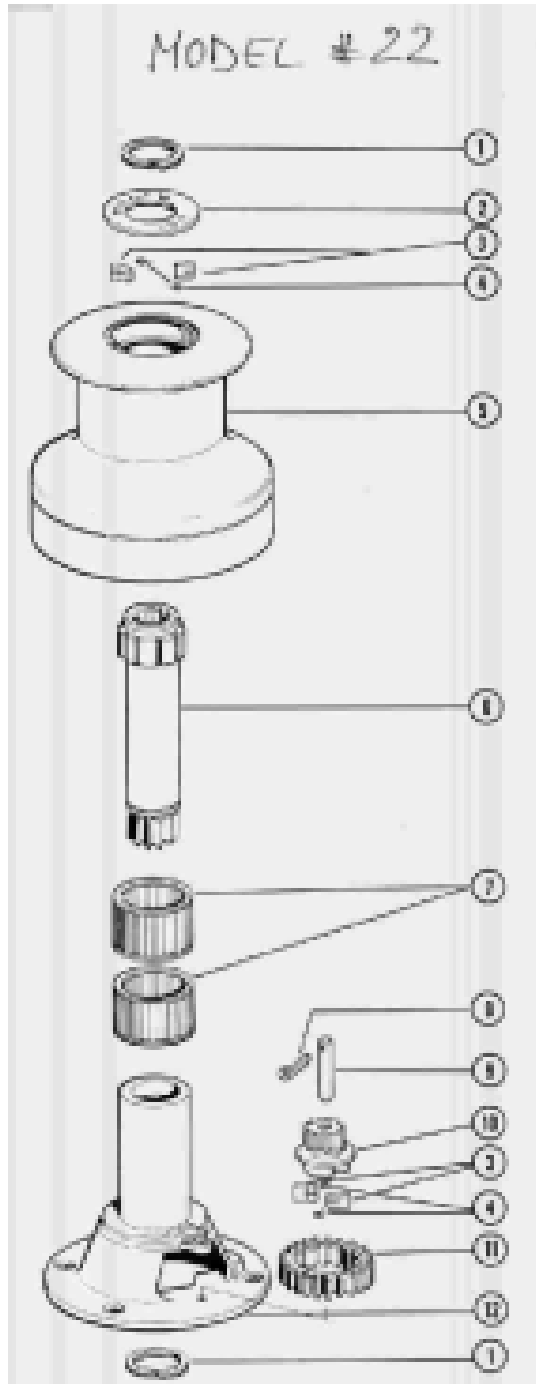






ТАВЛИЦА 97 CUTTEE. DECKPLAN

I.-4.



BARIENT WINCH #22  
WINCH ASSEMBLY

**Volume in Fuel Tank in Bow** of older Tayana 37 as a function of height of fuel in tank. As the tank is shaped in the form of a polyhedron, the exact relationship of fuel level to total volume is non-linear and difficult to assess. Based on data provided by Tom Beard in TOG News.

